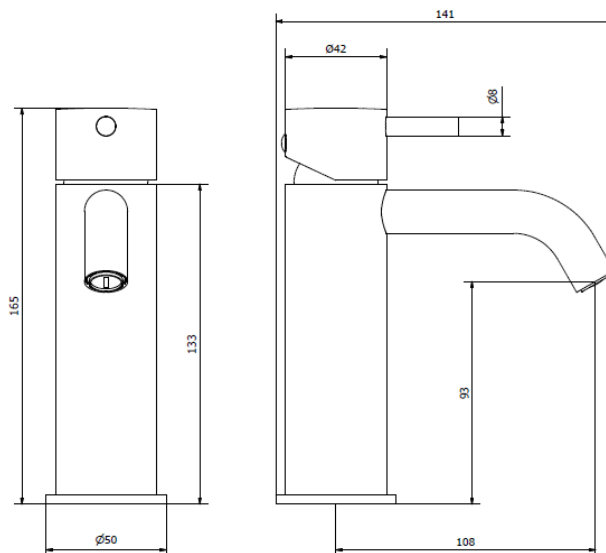




www.ibrubinetterie.it

MILANOTORINO
MT200

Range
Product



Product Description

Mono hole washbasin mixer with 1-1/4" click-clack automatic pop-up waste, base integrated within the body as single-casted and a metal lever.

Available Finishings

Chrome	<input checked="" type="checkbox"/>	Glossy Black	<input checked="" type="checkbox"/>	PVD Gold	<input type="checkbox"/>	Copper	<input type="checkbox"/>
Brushed Nickel	<input checked="" type="checkbox"/>	Matt White	<input type="checkbox"/>	Gold	<input checked="" type="checkbox"/>	Bronze	<input type="checkbox"/>
Glossy White	<input checked="" type="checkbox"/>	Matt Black	<input type="checkbox"/>	Rose Gold	<input checked="" type="checkbox"/>	YO - Your Own	<input checked="" type="checkbox"/>

Tech Specifications

iB Standard	Possible Alternative
-------------	----------------------

Cartridge	iB 25 mms Ceramic Discs Cartridge	Flow Restrictions – See below
Wall Hoses	Flexible Inox 3/8", 450 mms long	Flexible Inox 1/2", 450 mms long Copper Tails PEX Pipes
		Different lengths available on request

Aerator M 16,5X1

Flow Rate
(+/- 10%)

1 BAR	6.55 l/m
2 BAR	9 l/m
3 BAR	11 l/m

Changing aerator or adding flow restrictors in the hoses, the following range of TOP flow rates can be achieved	1,5 l/m
	3,0 l/m
	4,5 l/m
	6,5 l/m
	8,0 l/m
	10,0 l/m
	10,5 l/m

Material Brass
According to CUZN35PB2AL-B(CB752S)
Max Lead content: 1,6%

Production Main body is a single casted piece

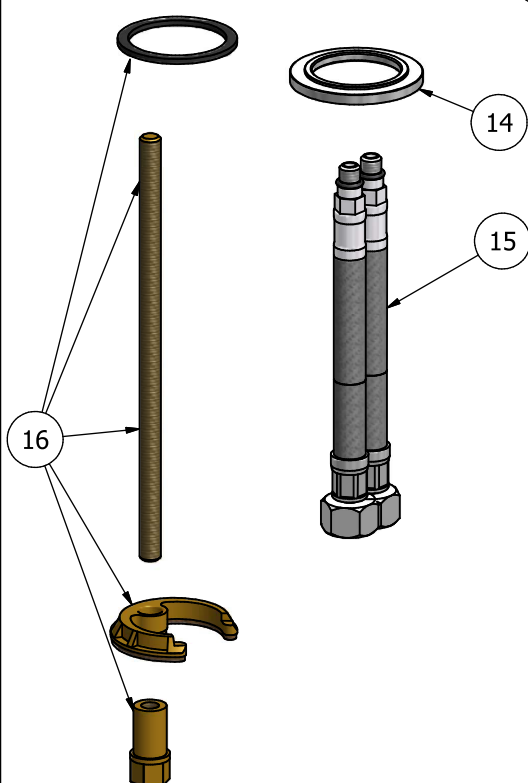
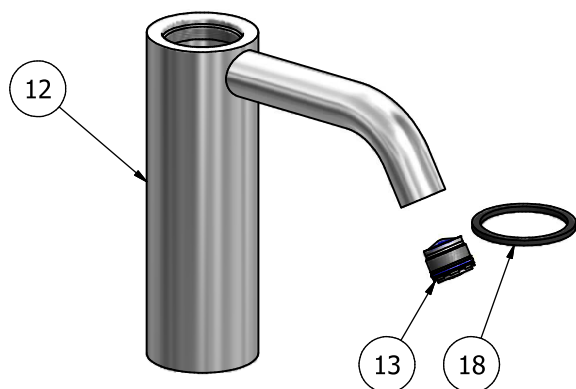
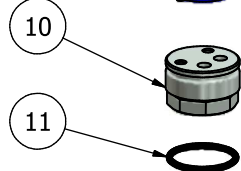
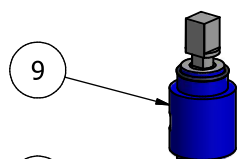
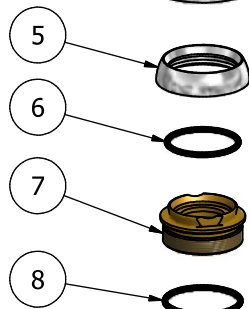
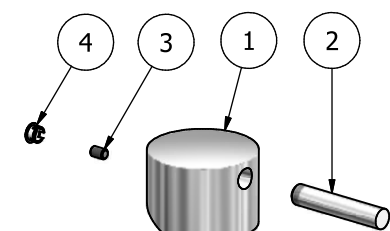


info@ibrubinetterie.it

p.iva 01785230986
capitale sociale € 420.000,00 i.v.

T +39 030 802101
F +39 030 803097

iB Rubinetterie SpA
via dei pianotti, 3/5 - 25068 sarezzo (bs) - Italy



Elenco parti			
ELEM	CODICE	NUMERO DI MAGAZZINO	QT
1	AC0011351	Handle Ø42 H30	1
2	AC0009461	Rod Ø8 H42 M8	1
3	AQ0001081	Inox grub screw M4x6 flat head	1
4	AQ0006650	Plug cover Ø7	1
5	AC0012004	Cartridge fixing nut chromed cover	1
6	AQ0006586	OR 25.12x1.78 NBR 70 SH	1
7	AS0011353	Cartridge fixing nut M30x1 H14.35	1
8	AQ0010564	OR 26.7x1.78 NBR 70 SH	1
9	AQ0013098	Ceramic cartridge Ø25 9x9 (K25 OP S)	1
10	AC0010810	Connection piece Ø27X18	1
11	AQ0010972	OR 23x2 NBR 70 SH	1
12	AQ0014246	Mixer body Ø42 H129	1
13	AQ0014236	Cachè perlator M16,5 x 1 coin slot (44.3230.450)	1
14	AC0010787	Base Ø5 H5	1
15	AQ0011013	Inox hose G3/8" M8x1 L400	2
16	AQ0011014	Fixing set	1
17	AQ0009837	Simple rapid waste 1"1/4	1
18	AQ0010307	Rubber packing Ø39 Ø33 H2	1

A termini di legge questo disegno non può essere riprodotto senza la nostra autorizzazione

 www.ibrubintetterie.it Via dei Piantoli 3/5 25068 Sarezzo - BRESCIA tel. 030892101 fax. 030803097 www.ibrubintetterie.it	Tolleranze generali ±0.1		Peso	Scala	Formato A3
	Materiale				
	Disegnatore Vivenzi M.	Data creazione 30/06/2014	Approvato da	Approvato il	
	Denominazione Exploso lavabo Milano Torino				
	Codice KMT200CCXN_15				

Via dei Pianotti 3/5
25068 Sarezzo - BRESCIA
tel. 030802101 fax. 030803097
www.ibrubinetterie.it

WARRANTY

all iB Rubinetterie SpA products are warranted for 10 years from the date of purchase, for the following cases:

- defects of casting, porosity and chrome plating
- operating defects caused by incorrect fabrication.

The warranty provides for the repair or replacement of products with fabrication defects recognized by our technical office.

There is no other type of compensation and the merchandise must be returned FOB our warehouse. The warranty only cover surface defects (scatches, dings, etc.) on fittings that have not been installed and used, returned in its original packaging with all components.

O-rings, gasket seals and components subject to wear proportional to use are warranted for 2 years.

The warranty is void in the following cases:

- error installing and putting the product into service.
- deterioration of chrome-plated surfaces due to use of cleaning products containing acids or abrasive substances
- deterioration of surface with finishes other than chrome plating. Their durability is, in fact, dependent on the user's care and gentleness of use.
- deterioration of the fitting due incorrect installation.
- improper repairs and maintenance performed without the company's prior authorization.

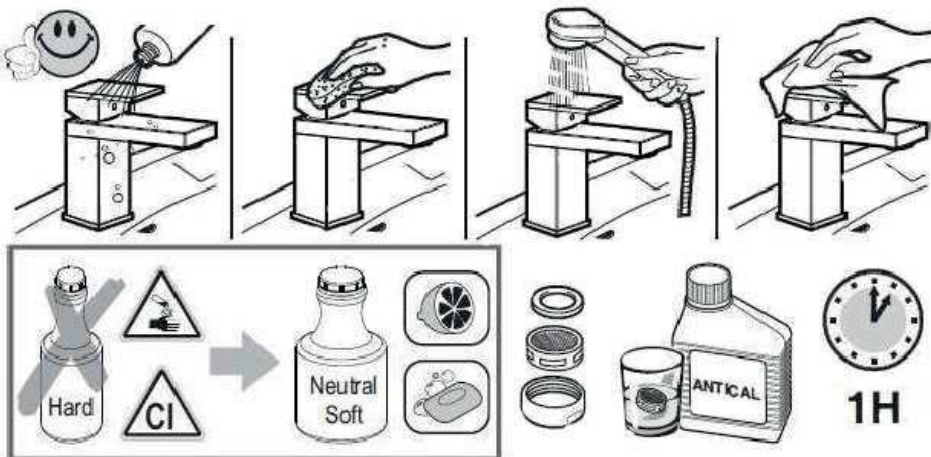
The warranty from iB Rubinetterie SpA is not renewable.

Cleaning:

We recommend cleaning chrome-plated and gold-finish surface with water and soap, using a soft cloth.

Do not use detergents that contain hydrochloric acid or abrasive substances.

Plastic parts must only be cleaned with soap and water and soft cloth.



IMPORTANT

Pressure & Temperature Requirements.

- * Hot and cold water inlet pressures should be equal.
- * Inlet pressure range: 150-1000 kPa
- * New Regulation: -500 kPa maximum operating pressure at any outlet within a building. (Ref. AS/NZS 3500.1-2003, Clause 3.3.4)
- * Maximum hot water temperature: 80°C.



italian design culture

iB Rubinetterie S.p.A.

Via dei Pianotti 3/5
25068 SAREZZO (BS) Italy
Iscr. Reg. Impr. BS 01785230986
R.E.A. BS 352087
P.IVA IT01785230986
Capitale Sociale € 420.000,00 i.v.
phone +39 030 802101
fax +39 030 803097
info@ibrubinetterie.it
www.ibrubinetterie.it

